

ZARC



ENDO YOUR WAY



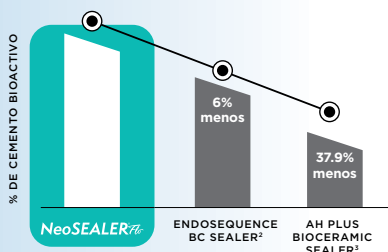
Top Endodontic Sealer

OPTIMIZED FOR BOTH WARM-VERTICAL AND SINGLE-CONE OBTURATION

NeoSEALER Flo® will not curdle or boil during warm obturation giving you the flexibility to use one product without reapplying, to streamline your practice.

FORMULATED WITH MORE BIOACTIVE CEMENT THAN OTHER BIOCERAMIC SEALERS ^{2,3}

MTA is the active material that promotes complete setting and supports healing.



RESIN-FREE

For maximum bioactivity and biocompatibility.

MTA-BASED BIOACTIVITY

Hydroxyapatite forms to ensure bioactive sealing.

DIMENSIONALLY STABLE

Unlike resin-based sealers, NeoSEALER Flo® is dimensionally stable meeting ADA standard.

ADA 57 std. <1% shrinkage & <0.1% expansion

NON-STAINING

- ✓ Won't discolor teeth — **EVER.**
- ✓ NaOCl won't cause discoloration.

HIGH FLOW

Fine particle size allows excellent flow to fill and seal lateral canals.

HIGH pH

To promote osteogenic response.

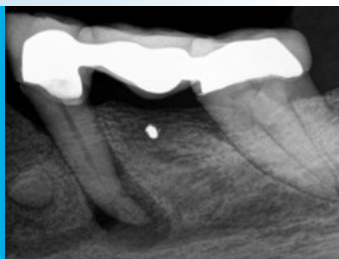


Figure 1
Pre-op

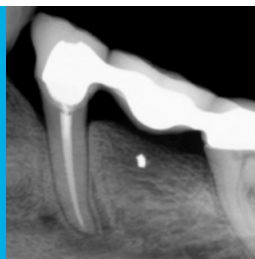


Figure 2
1-Year Recall

Case Study courtesy
of Dr. Ryan Walsh, DDS, MS

² NeoSEALER Flo contains 6% more bioactive cement by weight compared to EndoSequence BC Sealer (in-house data obtained through XRD analysis)

³ NeoSEALER Flo contains 37.9% more bioactive cement by weight compared to AH Plus Bioceramic (in-house data obtained through XRD analysis)

HIGH RADIOPACITY

NeoSEALER Flo® contains tantalum oxide as the radiopacifier. Tantalum oxide has a higher atomic number providing higher radiopacity than more commonly used zirconium oxide. This allows for higher cement content in NeoSEALER Flo® while maintaining excellent radiopacity.

Flex Flo Tip™

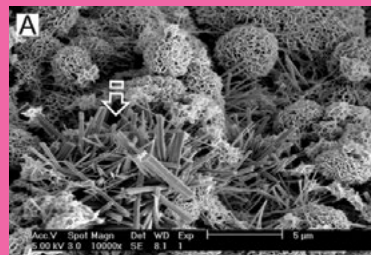
MORE PRECISION

81% LESS WASTE

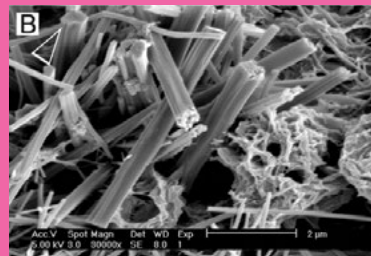
- Designed for 81% less waste than conventional tips
- Integrated stopper for accuracy of placement
- 25.5 gauge flexible tip to reach deep into smaller canals

UNLIKE INERT RESIN AND ZOE MATERIALS, MTA PROVIDES STATE OF THE ART TECHNOLOGY TO PROMOTE BIOACTIVITY AND SUPPORT HEALING

- After placement of MTA in the tooth, body fluids infiltrate the paste to cause setting.
- During this process calcium and hydroxide ions are released from the MTA, promoting hydroxyapatite (HA) formation on the MTA surfaces.
- When HA coats the surface, it hides the underlying MTA to minimize foreign body reactions and support healing responses of the pulpal or periapical tissue.



Calcium phosphate precipitated crystals scattered on the hydrated tricalcium silicate cement surface³.



High magnification image of the calcium phosphate crystals³.

OUR AVAILABLE NeoSEALER^{Flex} PRODUCTS

NeoSEALER^{Flex}

2.2 g Refill Syringe
(no tips)

Item Code: **ZNS22R**

NeoSEALER^{Flex}

2.2 g Kit
(with 20 Flex Flo Tips)

Item Code: **ZNS22K**

Flex Flo TipTM

20 pack Flex Flo Tips

Item Code: **ZFFT20**

Flex Flo TipTM

40 pack Flex Flo Tips

Item Code: **ZFFT40**



FROM ODONTOLOGISTS
TO ODONTOLOGISTS

hola@zarc4endo.com

www.zarc4endo.com



ZARC