



BlueShaper[®]

The New 6th Generation
of NiTi files is born



Pink + Blue

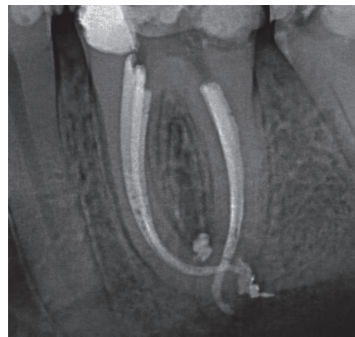
Two alloys in
one SYSTEM



FROM ODONTOLOGISTS
TO ODONTOLOGISTS



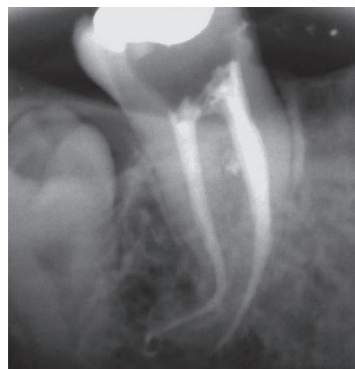
Guaranteed performance in all cases



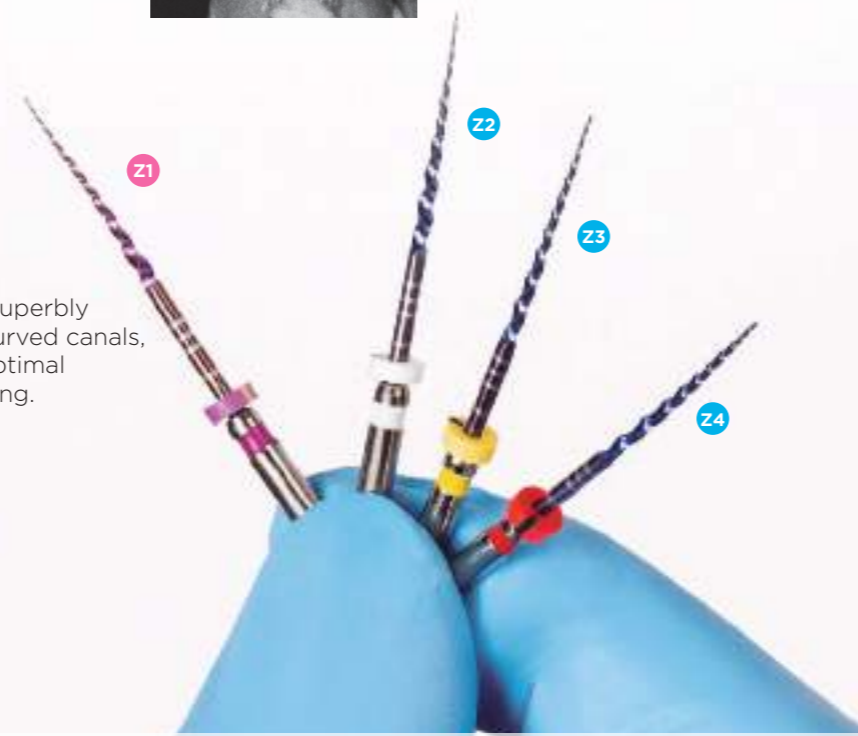
Arman Gazi
Flexible instruments that allow the most complex anatomies to be treated in complete safety.



José Aranguren
High cutting capacity with maximum flexibility, allowing the original anatomy of the canal to be retained.

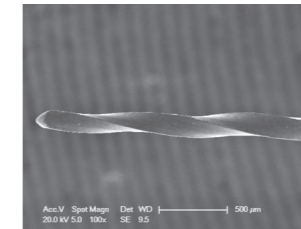


Edward Rizk
The instruments superbly shape long and curved canals, leading to their optimal cleaning and sealing.



Combined with the highest flexibility

BlueShaper®, more efficiently and smoothly, creates the tapered shape of the canal, bringing new advantages: highest flexibility and cyclic fatigue resistance, with a complete files system, without changing work dynamics.



Rey Juan Carlos University, Madrid.

Its convex section and progressive taper improves the cutting efficacy, minimizing the friction between the file and dentin.

BlueShaper® Highest flexibility on demand

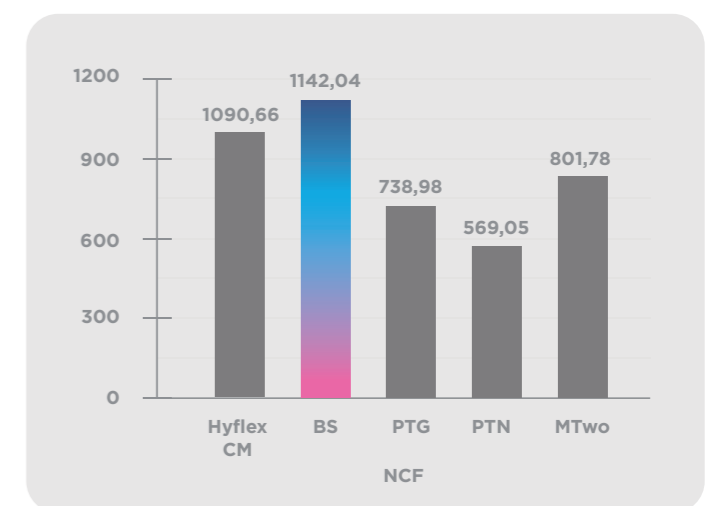
The double alloy of BlueShaper® brings predictable performance as developed by odontologists to odontologists.

We know there are impossible curvatures. BlueShaper® offers confidence, speed and safety in all situations.

BlueShaper® The efficiency of the new alloy

Highest resistance to the cyclic fatigue

BlueShaper® brings a higher cyclic fatigue resistance than other well known systems, what represents a fundamental advantage, as the cyclic fatigue is the responsible of the file separation.



Data on file

BlueShaper®

The most efficient geometry with the most advanced metallurgy



BlueShaper®, due to its improved double metallurgy, brings the highest clinical efficacy with the highest easiness and safety.



Unique system with double alloy



Great torsional resistance



Reduced cyclic fatigue



Maximized flexibility

Packaging information

BlueShaper® ZX 19 mm

ZBS19000ZX ZX 19 mm (6 units) sterile

BlueShaper® 21 mm

ZBS21Z0001 Z1 21 mm (6 units) sterile
ZBS21Z0002 Z2 21 mm (6 units) sterile
ZBS21Z0003 Z3 21 mm (6 units) sterile
ZBS21Z0004 Z4 21 mm (6 units) sterile
ZBS21Z0005 Z5 21 mm (6 units) sterile
ZBS21Z0006 Z6 21 mm (6 units) sterile
ZBS21Z0007 Z7 21 mm (6 units) sterile
ZBS21ASST6 ZX-Z5 21 mm (6 units) sterile
ZBS21ASST4 Z1-Z4 21 mm (4 units) sterile

BlueShaper® 25 mm

ZBS25Z0001 Z1 25 mm (6 units) sterile
ZBS25Z0002 Z2 25 mm (6 units) sterile
ZBS25Z0003 Z3 25 mm (6 units) sterile
ZBS25Z0004 Z4 25 mm (6 units) sterile
ZBS25Z0005 Z5 25 mm (6 units) sterile
ZBS25Z0006 Z6 25 mm (6 units) sterile
ZBS25Z0007 Z7 25 mm (6 units) sterile
ZBS25ASST6 ZX-Z5 25 mm (6 units) sterile
ZBS25ASST4 Z1-Z4 25 mm (4 units) sterile

BlueShaper® 31 mm

ZBS31Z0001 Z1 31 mm (6 units) sterile
ZBS31Z0002 Z2 31 mm (6 units) sterile
ZBS31Z0003 Z3 31 mm (6 units) sterile
ZBS31Z0004 Z4 31 mm (6 units) sterile
ZBS31Z0005 Z5 31 mm (6 units) sterile
ZBS31Z0006 Z6 31 mm (6 units) sterile
ZBS31Z0007 Z7 31 mm (6 units) sterile
ZBS31ASST6 ZX-Z5 31 mm (6 units) sterile
ZBS31ASST4 Z1-Z4 31 mm (4 units) sterile

BlueShaper® Gutta Percha

ZBSGP00Z3 Gutta Percha Z3 (60 units)
ZBSGP00Z4 Gutta Percha Z4 (60 units)
ZBSGP00Z5 Gutta Percha Z5 (60 units)
ZBSGPASST Gutta Percha Z3-Z5 (60 units)

BlueShaper® Paper points

ZBSPP00Z3 Paper Points Z3 (100 units)
ZBSPP00Z4 Paper Points Z4 (100 units)
ZBSPP00Z5 Paper Points Z5 (100 units)
ZBSPPASST Paper Points Z3-Z5 (100 units)

© Zarc4Endo S.A. • ENG-REV01-08/2021

hola@zarc4endo.com
www.zarc4endo.com

